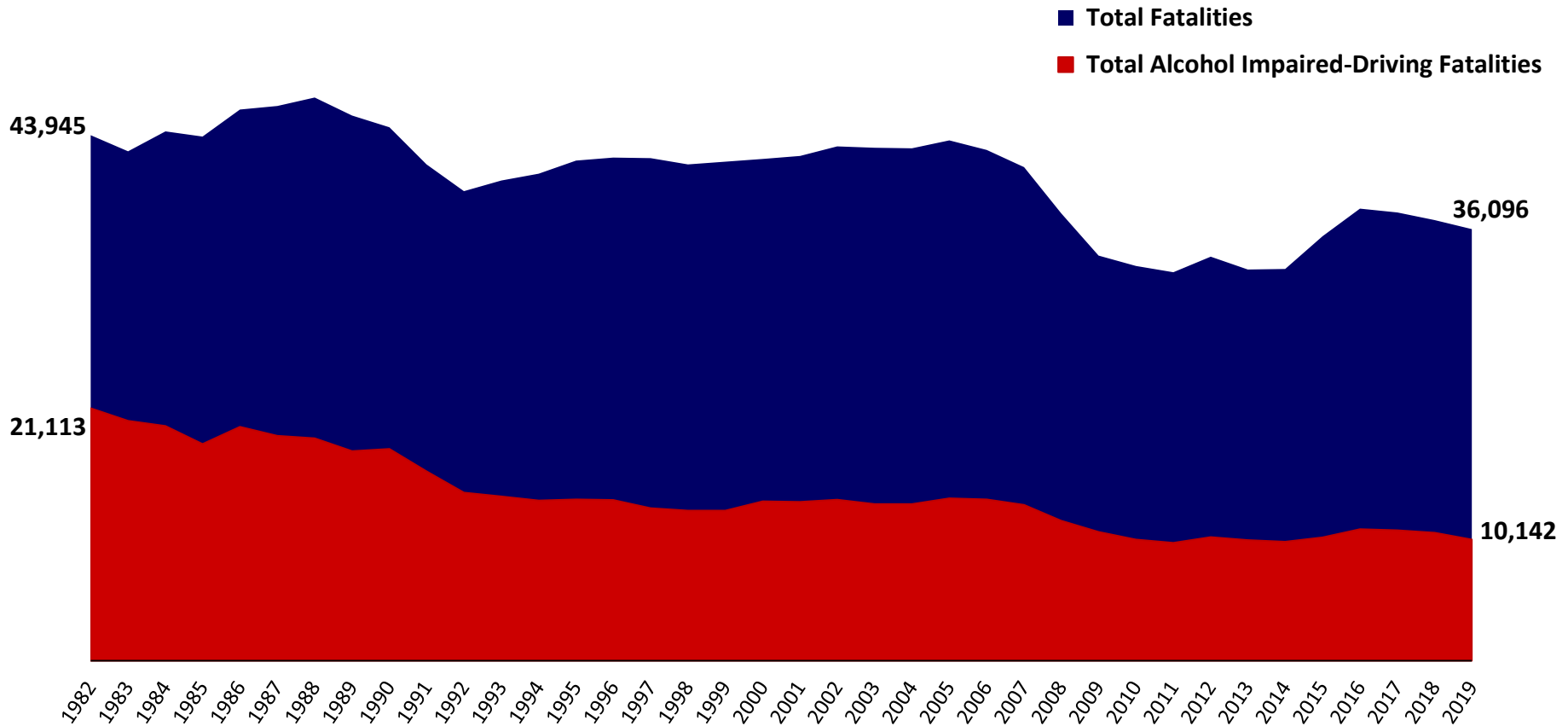


# 1982-2019 Fatalities in Motor Vehicle Crashes

Total driving fatalities have declined 18% since 1982.

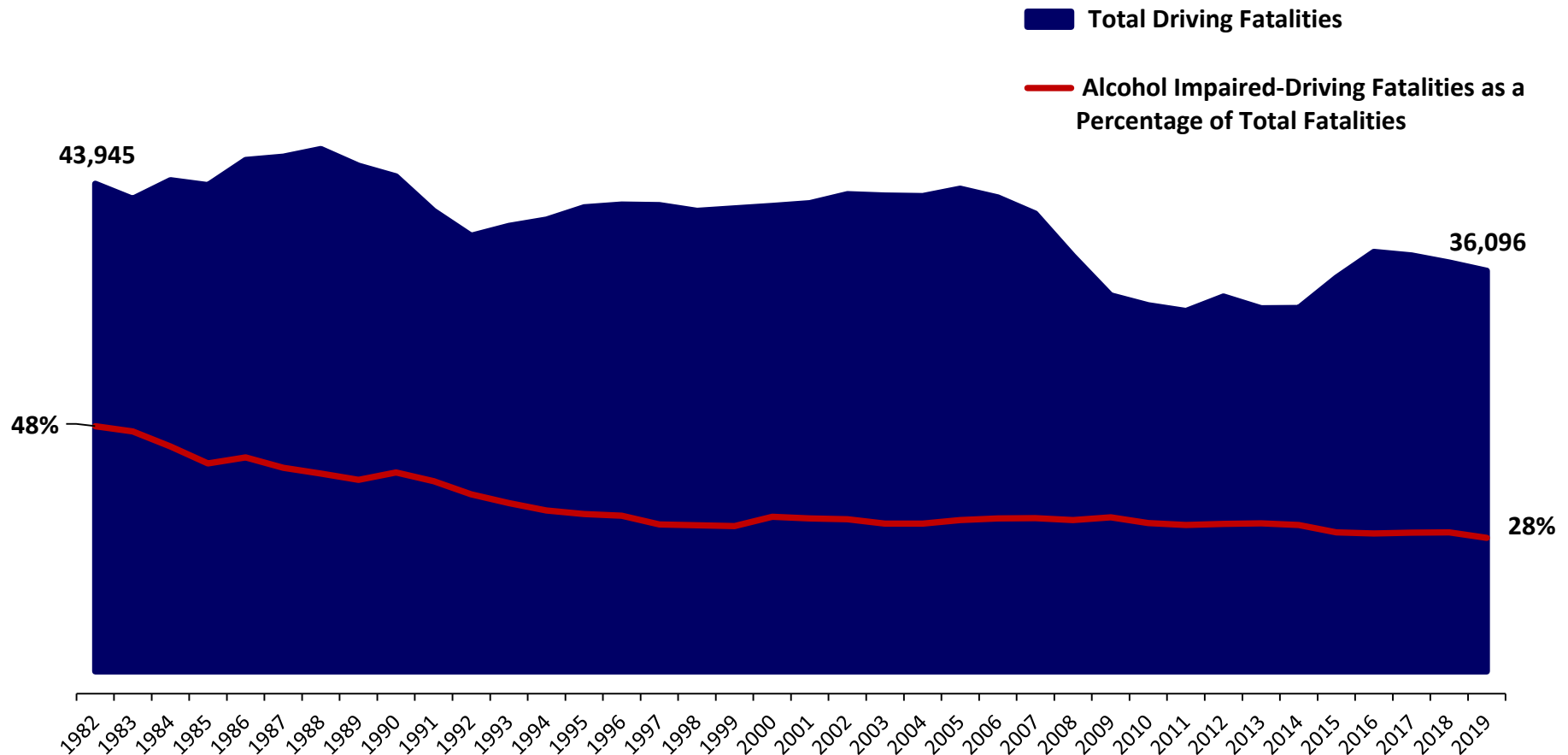
Alcohol impaired-driving fatalities have decreased 52% since 1982.



Source: [2019 National Highway Traffic Safety Administration, U.S. Department of Transportation, 2020](#). Alcohol impaired-driving fatalities represent the total number of fatalities (occupants and nonoccupants) in motor vehicle traffic crashes involving a driver or motorcycle rider with a blood alcohol concentration of .08 or higher, Fatal Analysis Reporting System (FARS).

# 1982-2019 Alcohol Impaired-Driving Fatalities as a Percent of Total Driving Fatalities

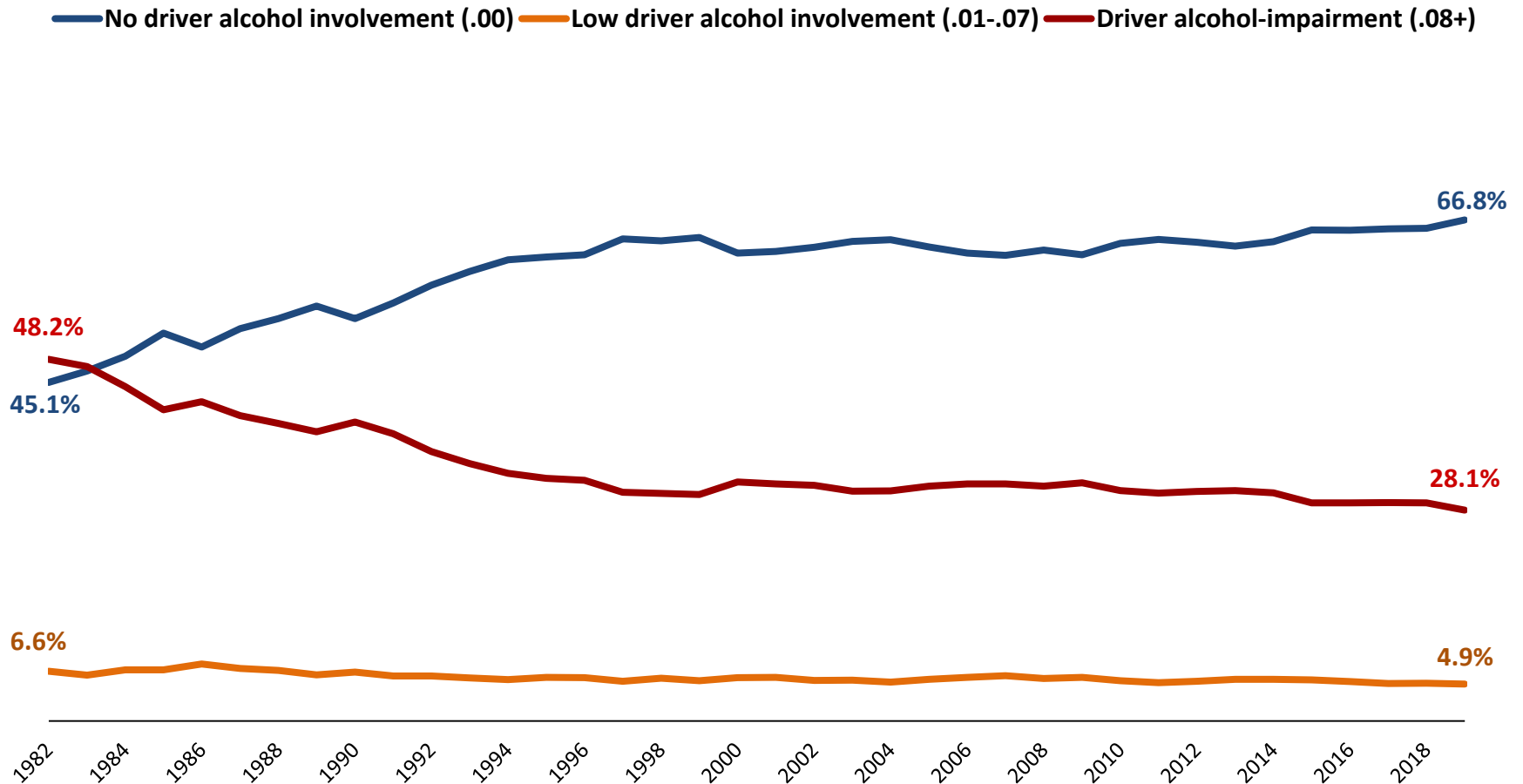
Alcohol-impaired driving fatalities fell to the lowest percentage of overall fatalities since 1982.



Source: [2019 National Highway Traffic Safety Administration, U.S. Department of Transportation, 2020](#). Alcohol impaired-driving fatalities represent the total number of fatalities (occupants and nonoccupants) in motor vehicle traffic crashes involving a driver or motorcycle rider with a blood alcohol concentration of .08 or higher, Fatal Analysis Reporting System (FARS).

# 1982-2019 Fatalities in Motor Vehicle Crashes by Highest Driver BAC in Crash

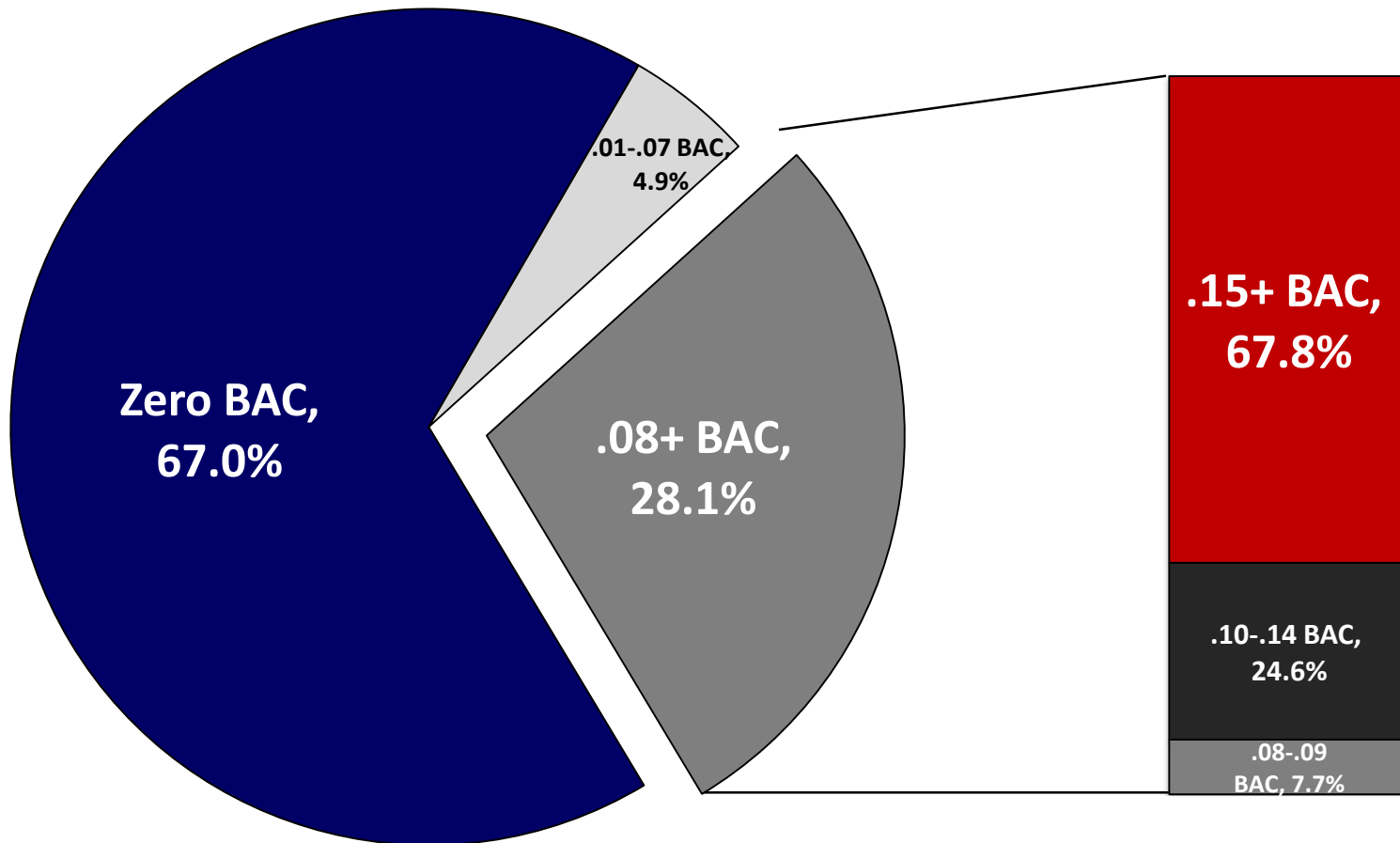
Most driving fatalities do not involve a drinking driver.



# 2019 Fatalities in Motor Vehicle Traffic Crashes by Driver BAC

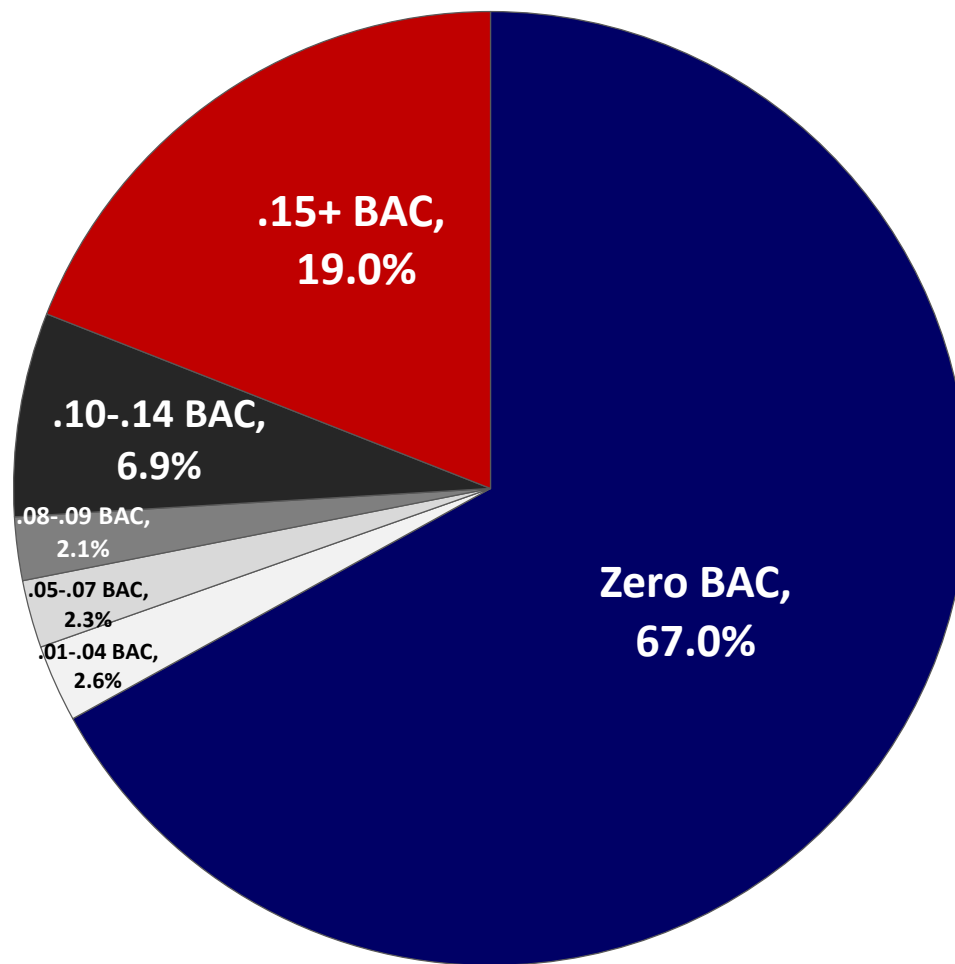
Most driving fatalities do not involve an alcohol-impaired driver..

Most alcohol impaired-driving fatalities involve high-BAC drivers (.15+).



# 2019 Fatalities in Motor Vehicle Traffic Crashes by Driver BAC

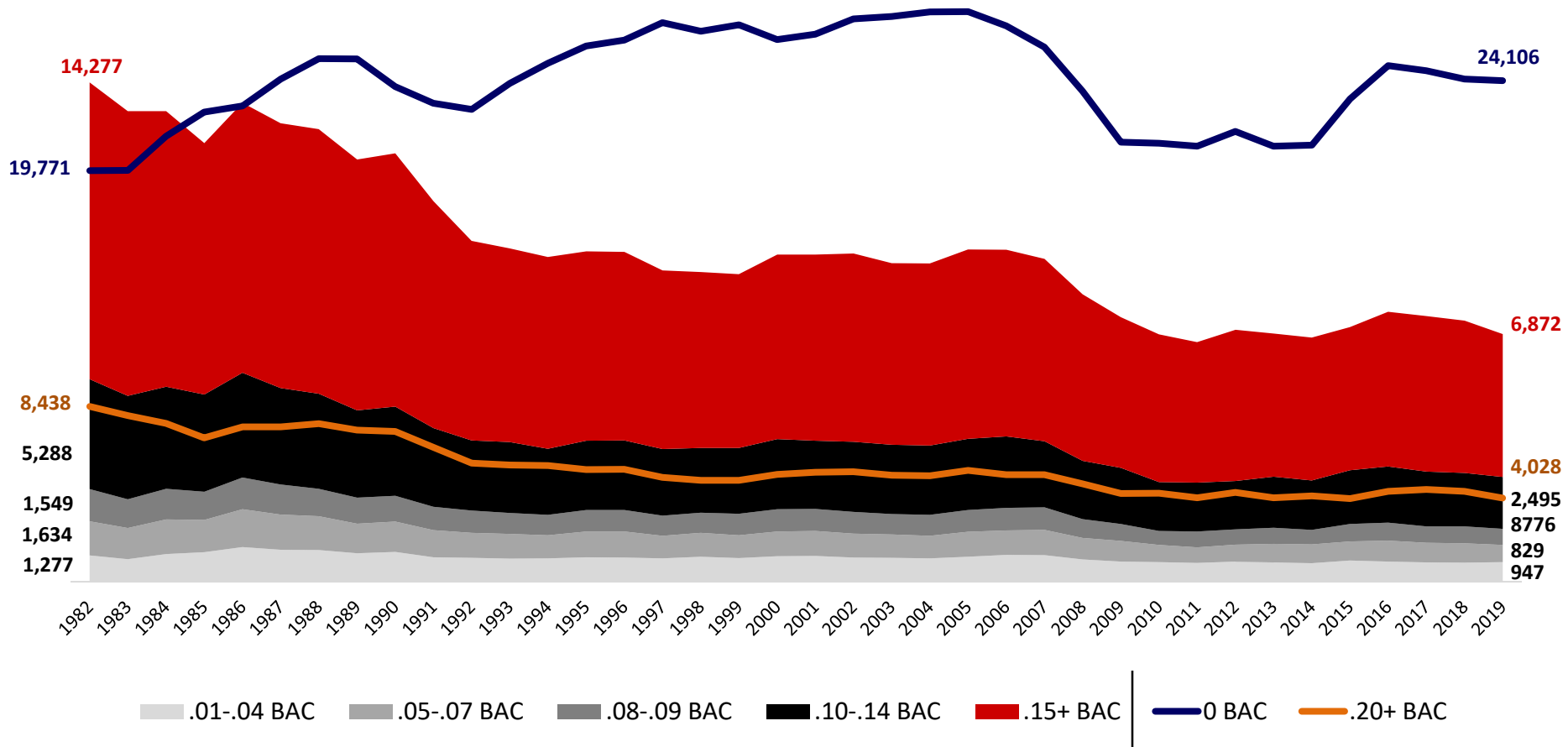
Most driving fatalities do not involve an alcohol-impaired driver.  
Most alcohol impaired-driving fatalities involve high-BAC drivers (.15+).



# 1982-2019 Fatalities in Motor Vehicle Traffic Crashes by Driver BAC

Most impaired-driving fatalities involve high-BAC drivers (.15+).

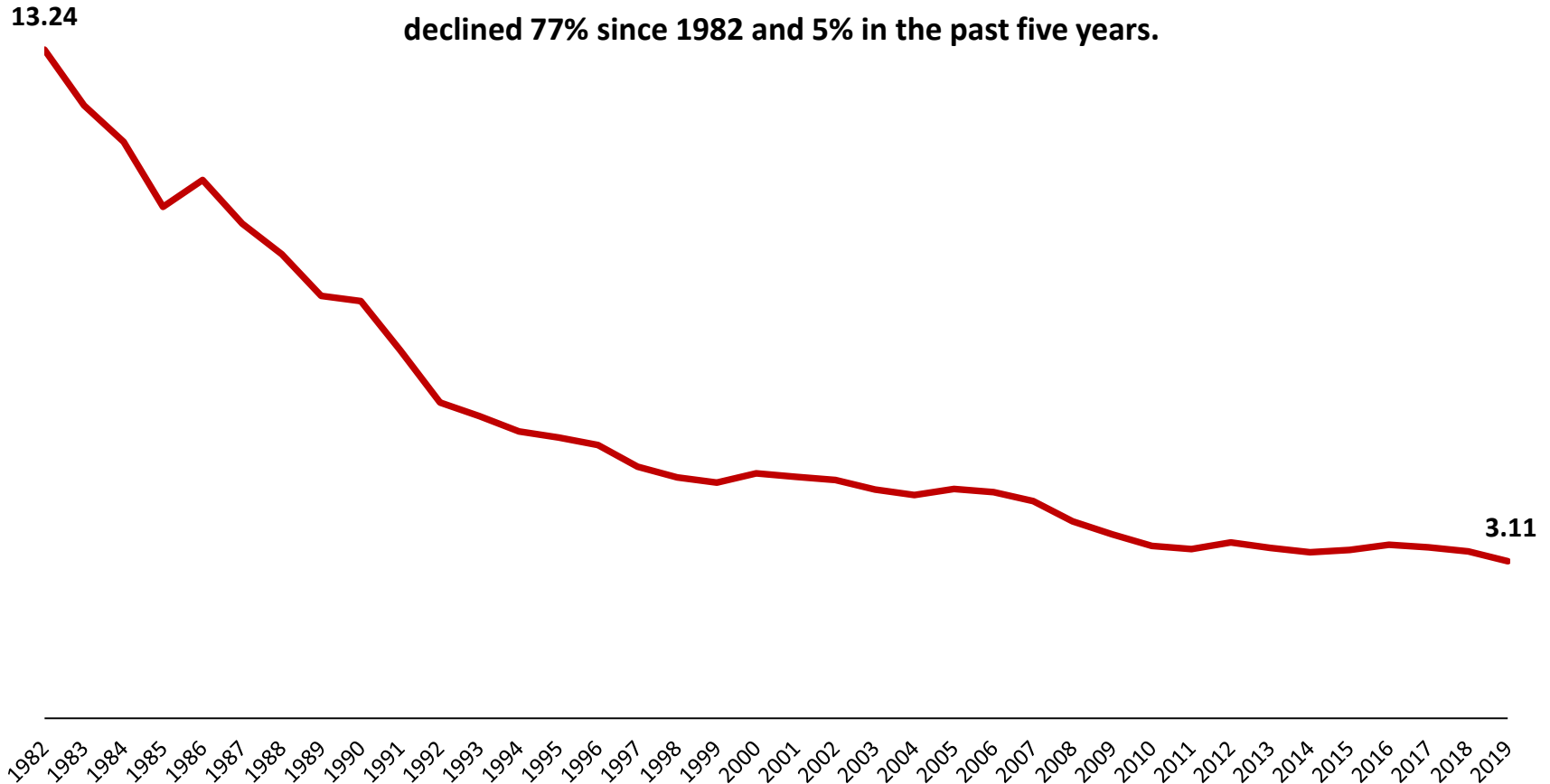
In 2019, the average BAC among alcohol impaired drivers involved in fatal crashes was 0.18.



Source: 2019 National Highway Traffic Safety Administration, U.S. Department of Transportation, 2020. Fatalities in motor vehicle traffic crashes by the highest driver BAC in the crash, Fatal Analysis Reporting System (FARS).

# 1982-2019 Total Alcohol Impaired-Driving Fatalities per Billion Vehicle Miles Traveled

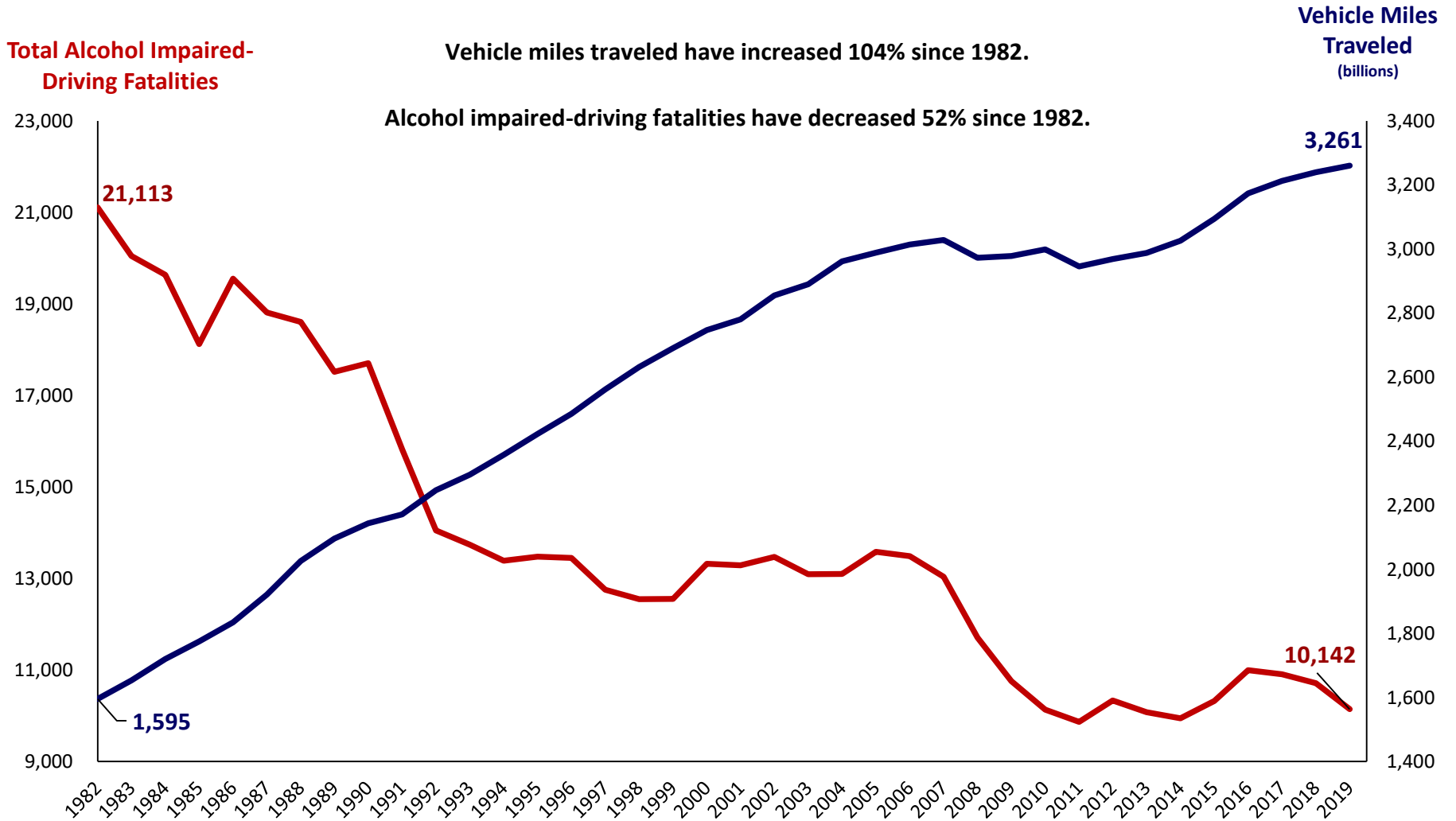
Total alcohol impaired-driving fatalities per billion vehicle miles traveled declined 77% since 1982 and 5% in the past five years.



Fatalities Source: 2019 National Highway Traffic Safety Administration, U.S. Department of Transportation, 2020. Fatalities in motor vehicle traffic crashes by the highest driver BAC in the crash, Fatal Analysis Reporting System (FARS).

Vehicle Miles Traveled Source: 2019 Highway Statistics, Federal Highway Administration, 2020. <https://www.fhwa.dot.gov/policyinformation/statistics/2019/pdf/vm2.pdf>

# 1982-2019 Total Alcohol Impaired-Driving Fatalities vs. Vehicle Miles Traveled



Fatalities Source: 2019 National Highway Traffic Safety Administration, U.S. Department of Transportation, 2020. Fatalities in motor vehicle traffic crashes by the highest driver BAC in the crash, Fatal Analysis Reporting System (FARS).  
 Vehicle Miles Traveled Source: 2019 Highway Statistics, Federal Highway Administration, 2020. <https://www.fhwa.dot.gov/policyinformation/statistics/2019/pdf/vm2.pdf>



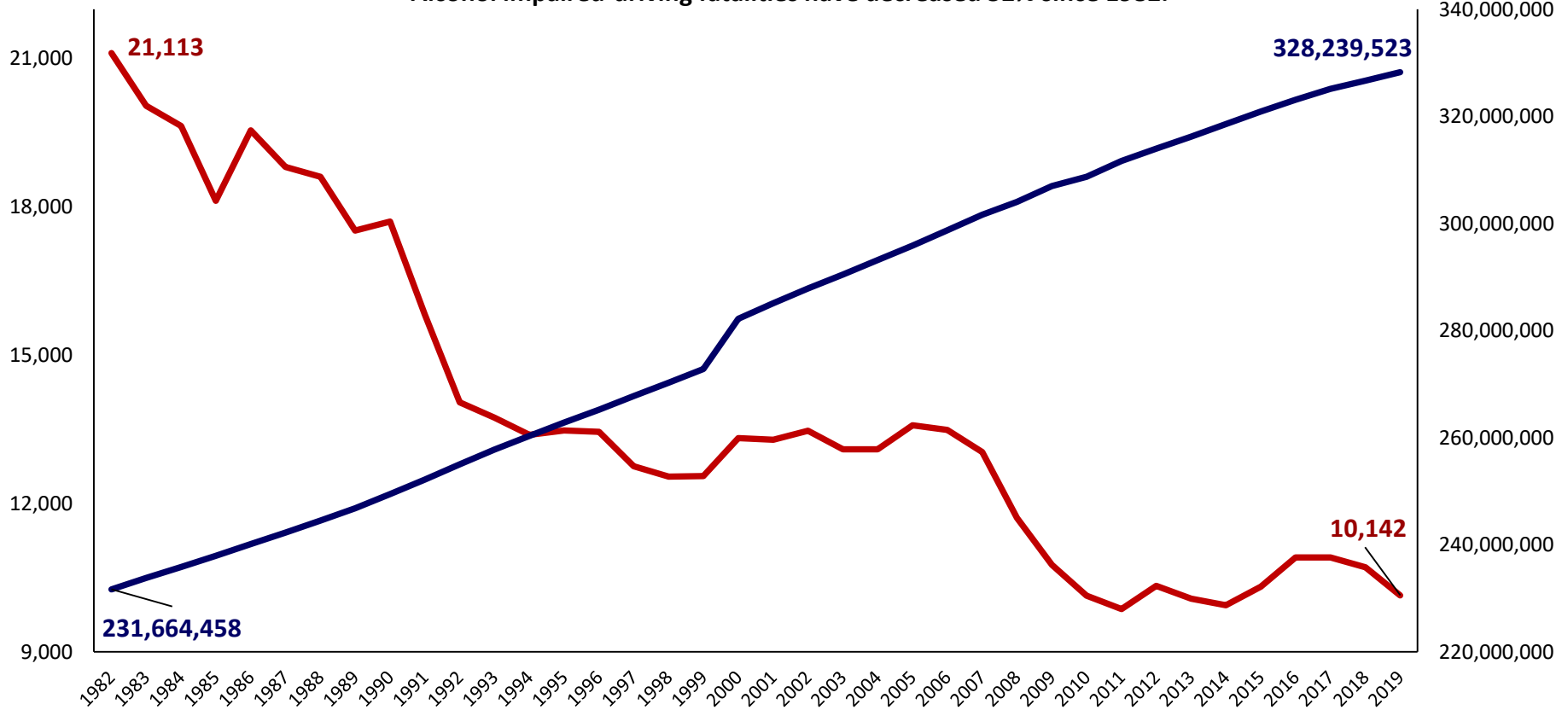
# 1982-2019 Total Alcohol Impaired-Driving Fatalities vs. U.S. Population

**Total alcohol Impaired-Driving Fatalities**

The U.S. population has increased 42% since 1982.

**Total U.S. Population**

Alcohol impaired-driving fatalities have decreased 52% since 1982.



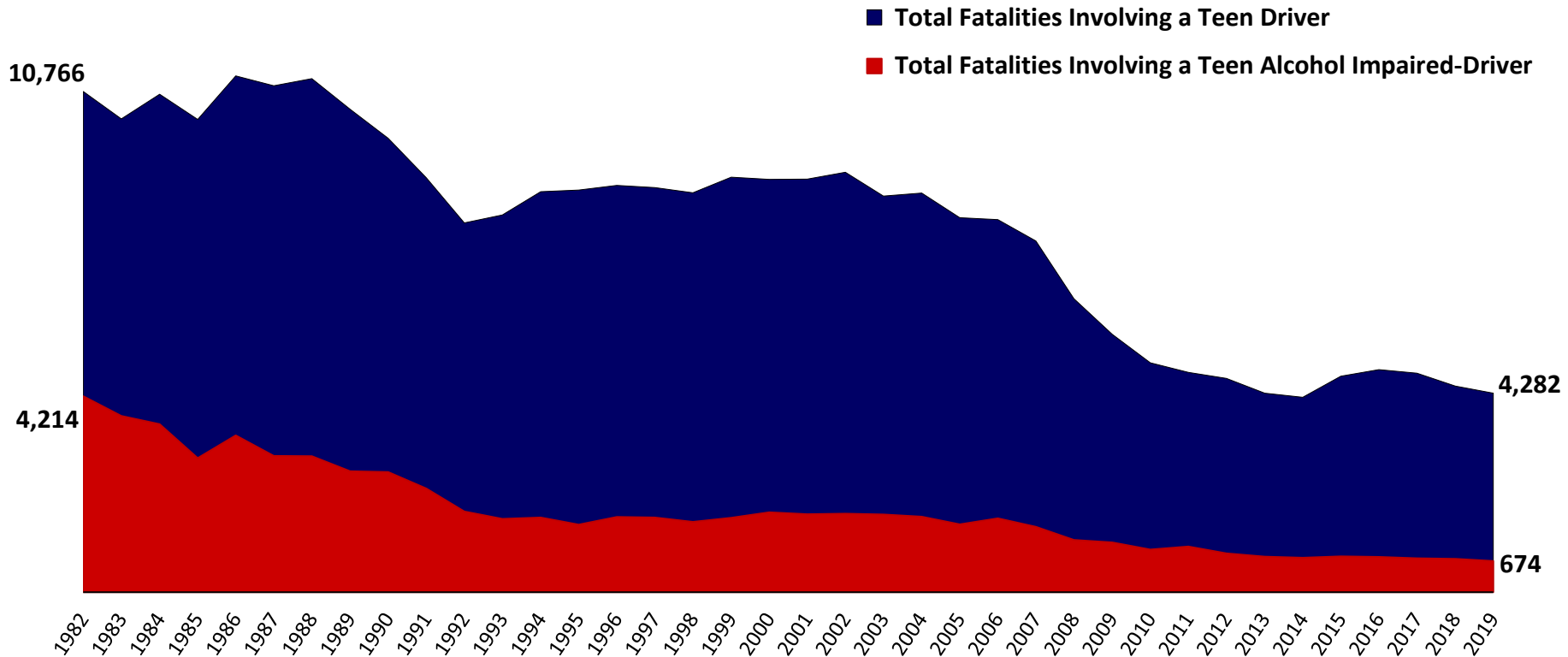
Fatalities Source: 2019 National Highway Traffic Safety Administration, U.S. Department of Transportation, 2020. Fatalities in motor vehicle traffic crashes by the highest driver BAC in the crash, Fatal Analysis Reporting System (FARS).

Census Source: U.S. Census Bureau, Intercensal population estimates 1980-1989 <http://www.census.gov/popest/archives/1980s/st8090ts.txt>; 1990-1999, [http://www.census.gov/popest/archives/2000s/vintage\\_2001/CO-EST2001-12/](http://www.census.gov/popest/archives/2000s/vintage_2001/CO-EST2001-12/); 2000-2006, <http://www.census.gov/popest/states/NST-ann-est.html>; 2007, [http://factfinder.census.gov/servlet/DTTable?\\_bm=y&-geo\\_id=01000US&-ds\\_name=PEP\\_2007\\_EST&-lang=en&-mt\\_name=PEP\\_2007\\_EST\\_G2007\\_T001&-format=&-CONTEXT=dt](http://factfinder.census.gov/servlet/DTTable?_bm=y&-geo_id=01000US&-ds_name=PEP_2007_EST&-lang=en&-mt_name=PEP_2007_EST_G2007_T001&-format=&-CONTEXT=dt); 2008, <http://www.census.gov/popest/states/NST-ann-est.html>; 2009-2010 <http://2010.census.gov/2010census/popmap/>; 2011-2015 <https://www2.census.gov/programs-surveys/popest/tables/2010-2016/state/totals/nst-est2016-01.xlsx>; 2016-2019 [https://www.census.gov/data/tables/time-series/demo/popest/2010s-national-total.html#par\\_textimage\\_2011805803](https://www.census.gov/data/tables/time-series/demo/popest/2010s-national-total.html#par_textimage_2011805803)

# 1982-2019 Teen Driving Fatalities in Motor Vehicle Crashes

Total fatalities involving a teen driver have declined 60% since 1982 and increased 2% in the past five years.

Fatalities involving a teen alcohol impaired-driver have decreased 84% since 1982 and 9% in the past five years.



Source: 2019 National Highway Traffic Safety Administration, U.S. Department of Transportation, 2020. Teen driving fatalities represent the total number of fatalities (occupants and nonoccupants) in motor vehicle traffic crashes involving a driver or motorcycle rider ages 16-20. Teen impaired-driving fatalities represent the total number of fatalities (occupants and nonoccupants) in motor vehicle traffic crashes involving a driver or motorcycle rider ages 16-20 with a blood alcohol concentration of .08 or higher, Fatal Analysis Reporting System (FARS).

# Fatalities in Motor Vehicle Traffic Crashes Involving Various Factors

2016 2017 2018 2019

