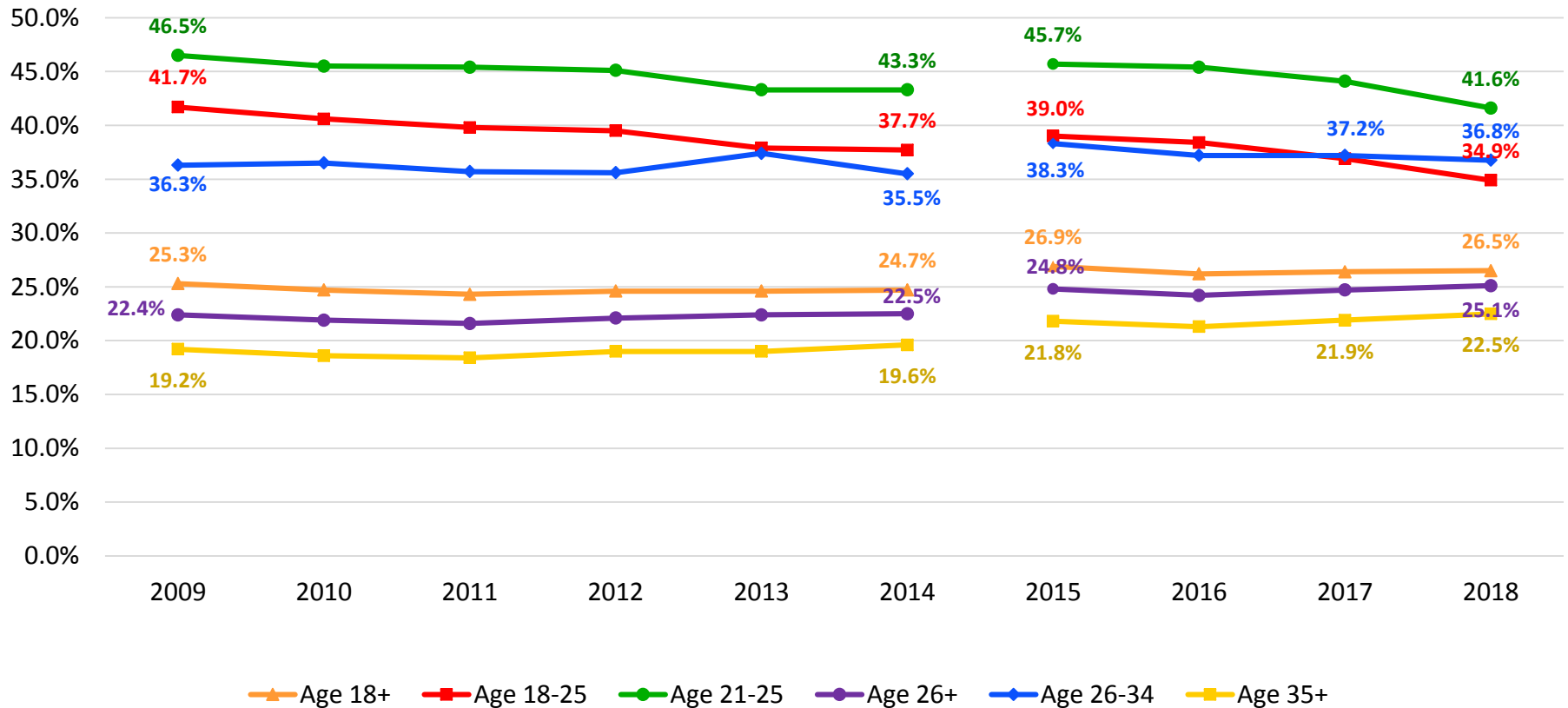


National Survey on Drug Use and Health

Past Month Binge Drinking, By Age



Source: 2018 National Survey on Drug Use and Health, an annual survey representative of the civilian, non-institutionalized population of the U.S. aged 12 years old or older conducted by the Substance Abuse and Mental Health Services Administration, U.S. Department of Health & Human Services, 2019: <https://www.samhsa.gov/data/nsduh/reports-detailed-tables-2018-NSDUH>

*Note: In 2015, the threshold for determining binge alcohol use for females was lowered from five or more drinks on an occasion for the 2014 and earlier NSDUHs to four or more drinks on an occasion for the 2015 NSDUH to ensure consistency with federal definitions and other federal data collection programs. The threshold for males in 2015 remained at five or more drinks on an occasion. New baselines began in 2015 for estimates of binge and heavy alcohol use for females and for binge and heavy alcohol use for the overall population (both genders).