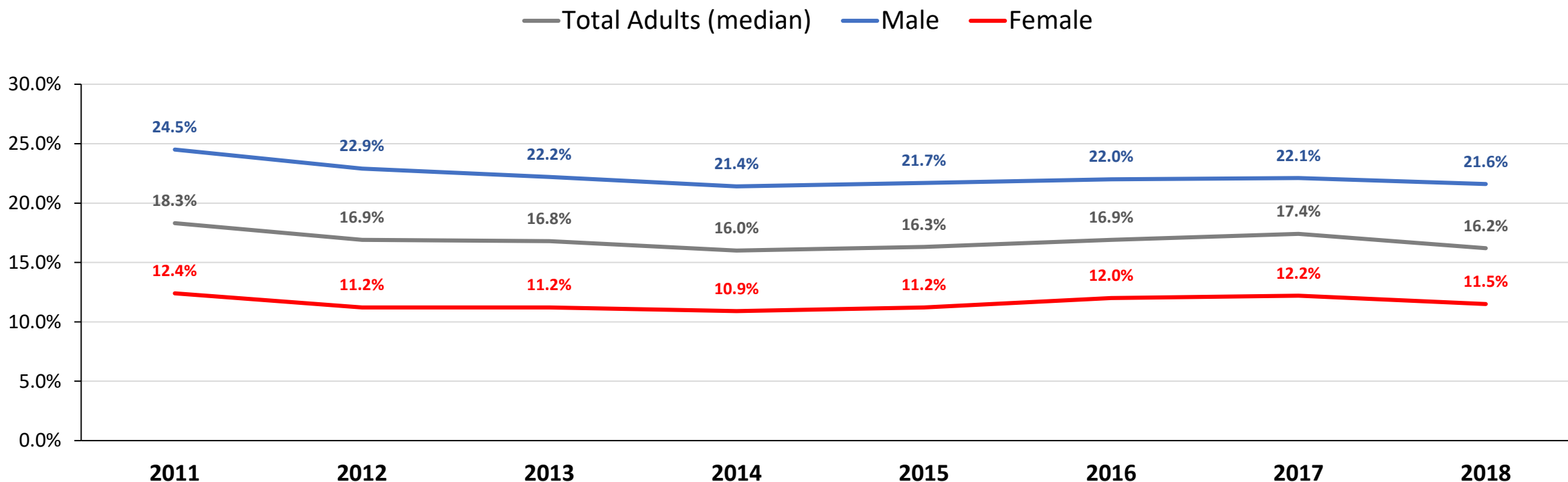


# Behavioral Risk Factor Surveillance System

## Percent of adult drinkers who binge drank in the past 30 days, 2011-2018



**Source:** [Behavioral Risk Factor Surveillance System](#), conducted by the Centers for Disease Control and Prevention.

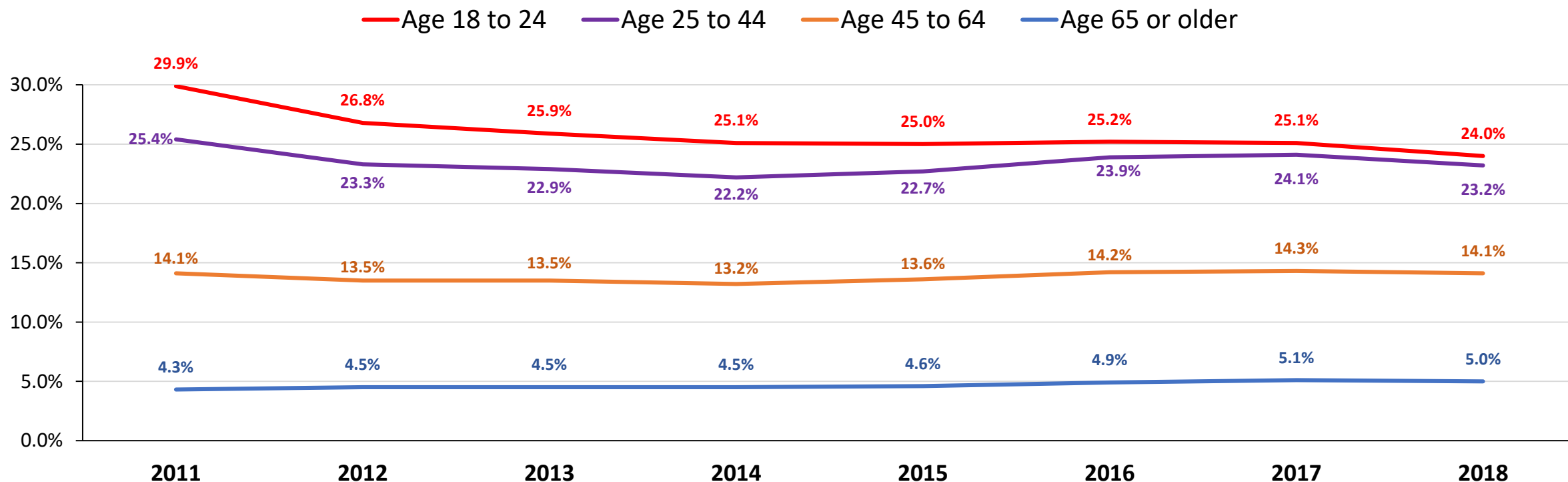
**Question:** "Considering all types of alcoholic beverages, how many times during the past 30 days did you have X [X = 5 for men, X = 4 for women] or more drinks on an occasion?" Asked of those who have had at least one drink in the past 30 days.

**Sample:** Age 18+, all U.S. states and territories.

**Base:** Had alcohol in the past 30 days ("During the past 30 days, how many days per week or per month did you have at least one drink of any alcoholic beverage such as beer, wine, a malt beverage, or liquor?")

# Behavioral Risk Factor Surveillance System

## Percent of adult drinkers who binge drank in the past 30 days, by age range, 2011-2018



**Source:** [Behavioral Risk Factor Surveillance System](#), conducted by the Centers for Disease Control and Prevention.

**Question:** “Considering all types of alcoholic beverages, how many times during the past 30 days did you have X [X = 5 for men, X = 4 for women] or more drinks on an occasion?” Asked of those who have had at least one drink in the past 30 days.

**Sample:** Age 18+, all U.S. states and territories.

**Base:** Had alcohol in the past 30 days (“During the past 30 days, how many days per week or per month did you have at least one drink of any alcoholic beverage such as beer, wine, a malt beverage, or liquor?”)