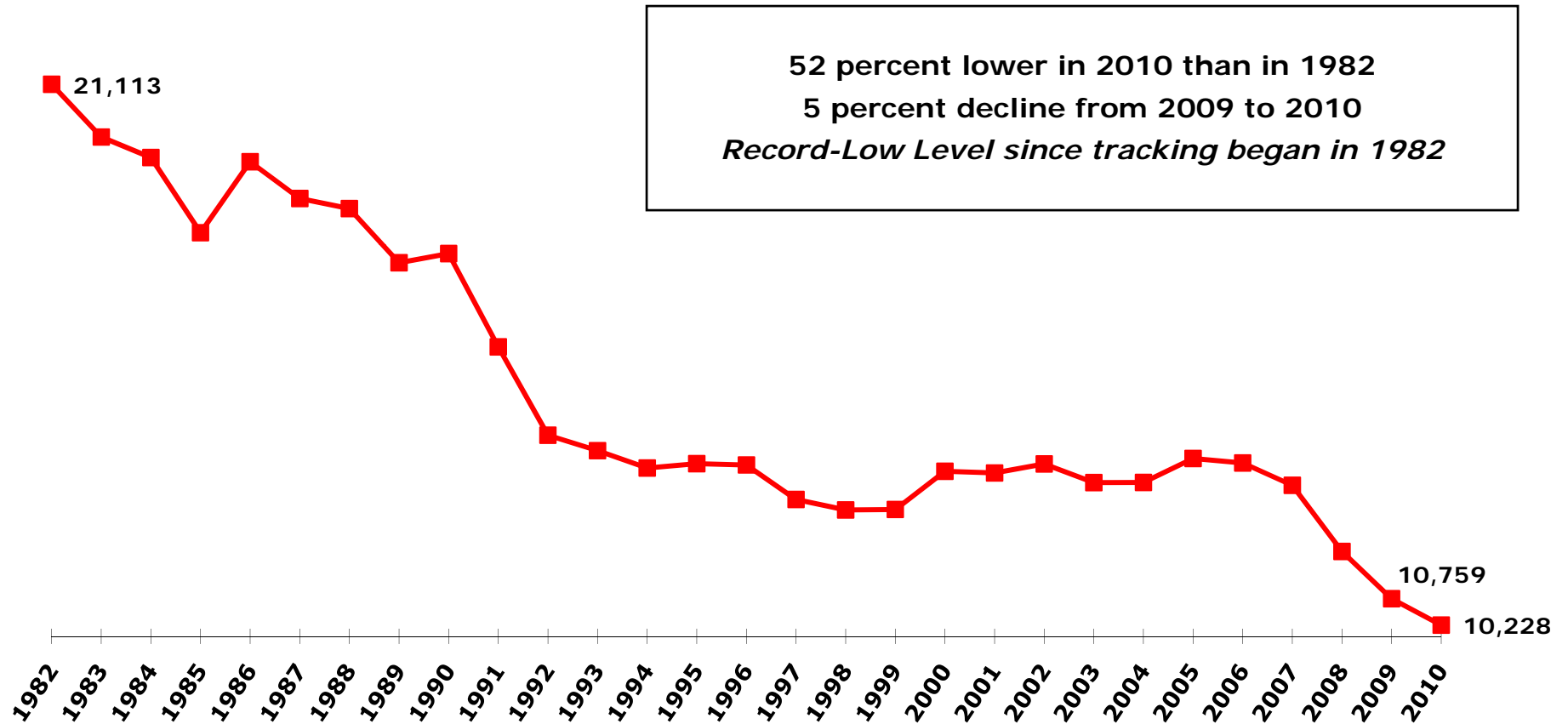
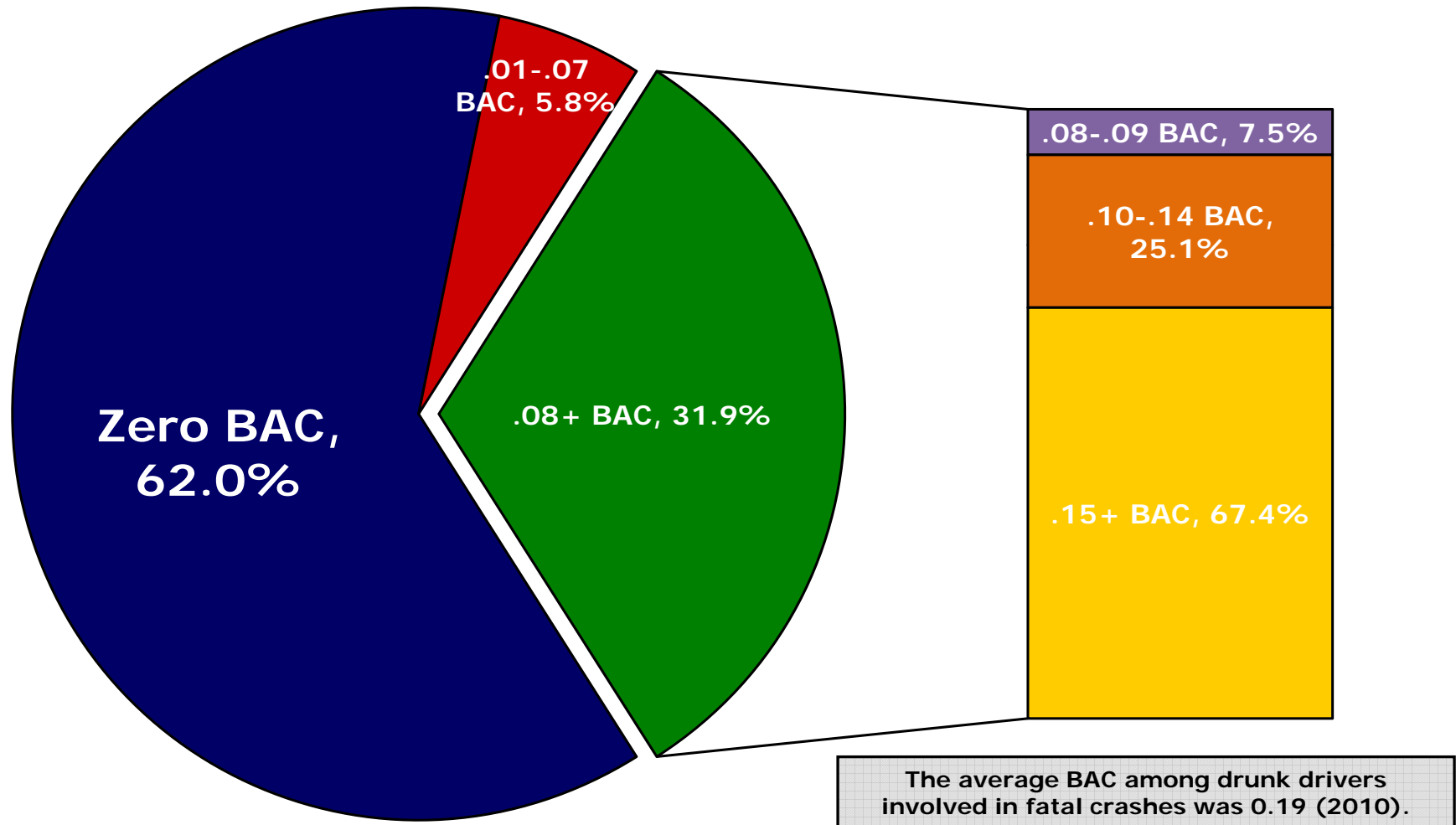


U.S. Department of Transportation National Highway Traffic Safety Administration Total Fatalities in Drunk-Driving Crashes



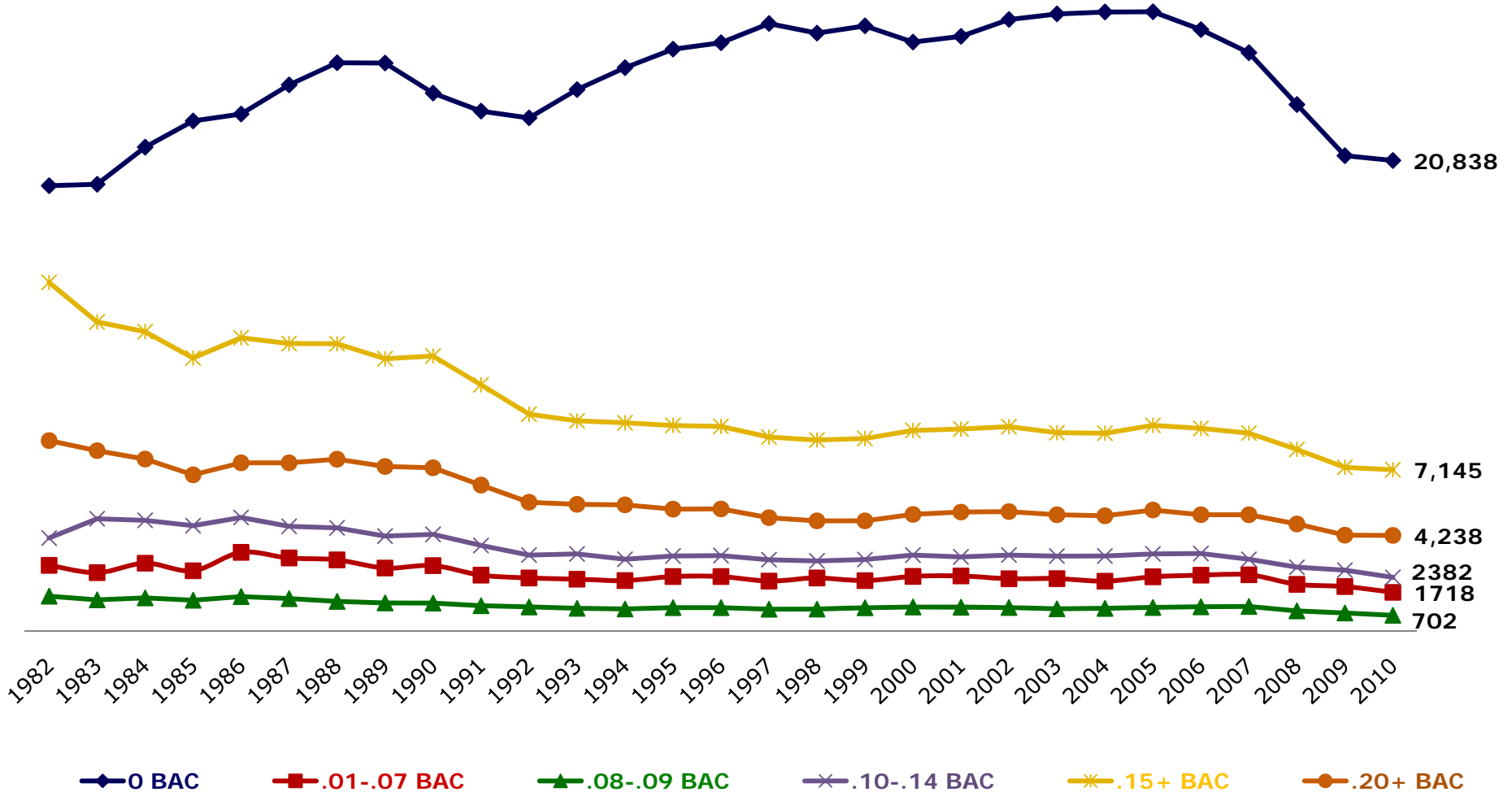
Source: National Highway Traffic Safety Administration, U.S. Department of Transportation. Drunk-driving fatalities represent the total number of fatalities (occupants and nonoccupants) in motor vehicle traffic crashes involving a driver or motorcycle rider with a blood alcohol concentration of .08 or higher. <http://www-nrd.nhtsa.dot.gov/Pubs/811552.pdf>

U.S. Department of Transportation
National Highway Traffic Safety Administration
2010 Fatalities in Motor Vehicle Traffic Crashes by Driver BAC



Source: National Highway Traffic Safety Administration, U.S. Department of Transportation. Fatalities in motor vehicle traffic crashes by the highest driver BAC in the crash, 2010 Fatal Analysis Reporting System (FARS).

U.S. Department of Transportation National Highway Traffic Safety Administration 1982-2010 Fatalities in Motor Vehicle Traffic Crashes by Driver BAC



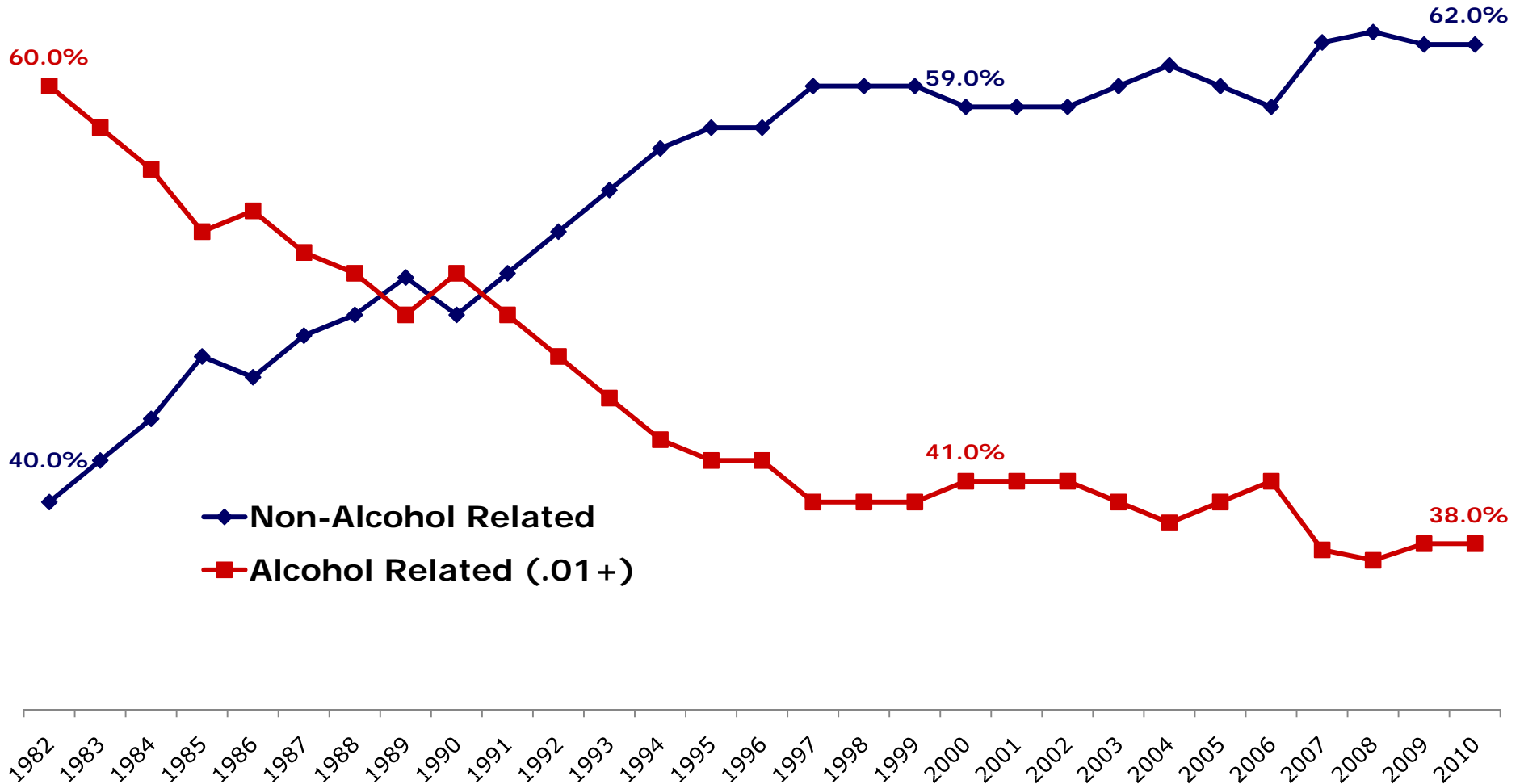
Source: National Highway Traffic Safety Administration, US Department of Transportation, 2010. Fatality Analysis Reporting System (FARS).

U.S. Department of Transportation

National Highway Traffic Safety Administration

Crash Fatalities by Alcohol Involvement

Fatalities by the Highest BAC in the Crash

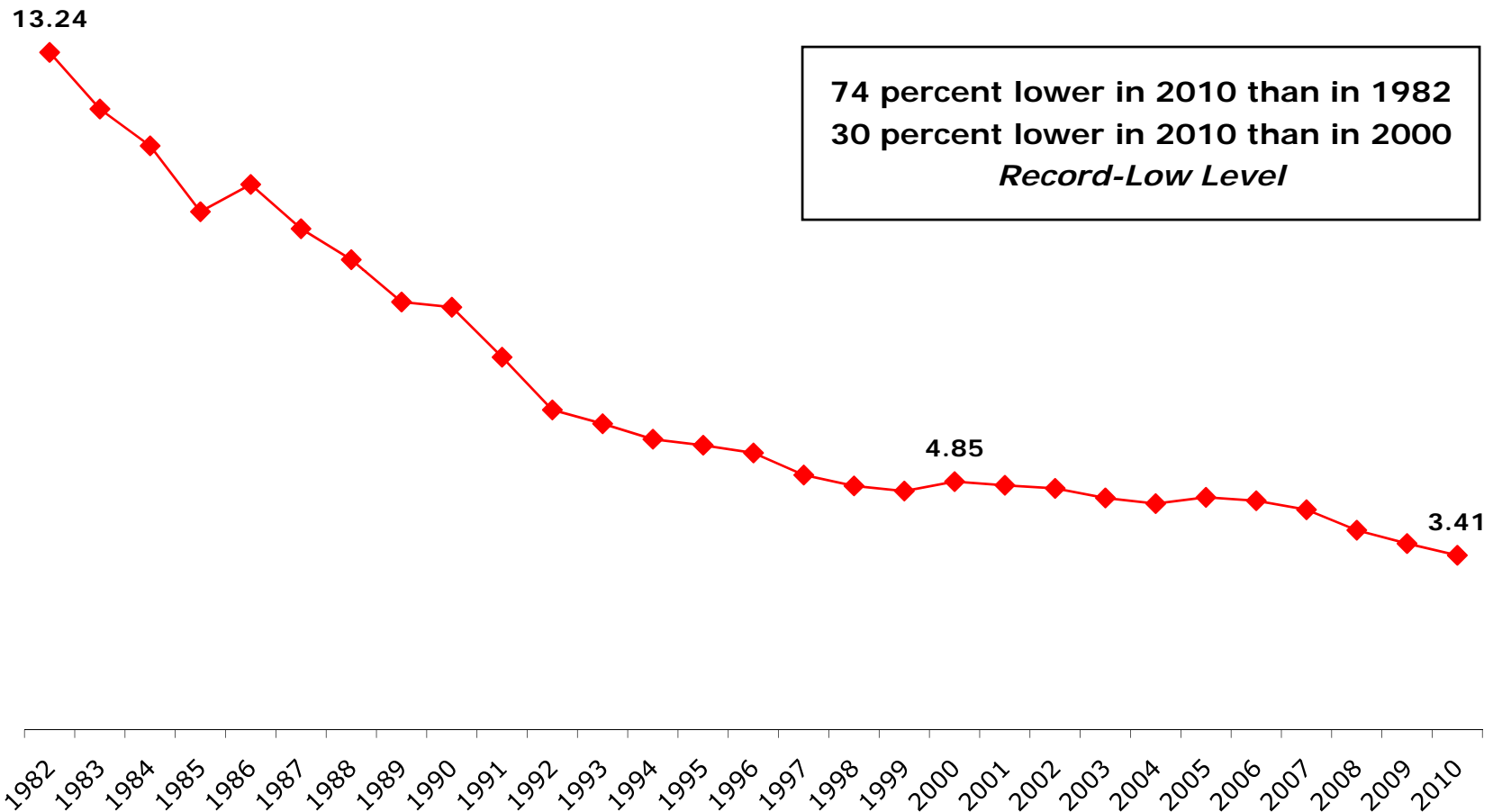


Source: U.S. Department of Transportation, National Highway Traffic Safety Administration, NHTSA defines a fatal crash as alcohol-related or alcohol-involved if at least one driver, motorcycle operator or nonoccupant (such as pedestrians, pedacyclists, occupants of parked motor vehicles, joggers, skateboard riders, people riding on animals, and persons riding animal-drawn conveyances) involved in the crash is determined to have had a BAC of .01 or higher.

U.S. Department of Transportation

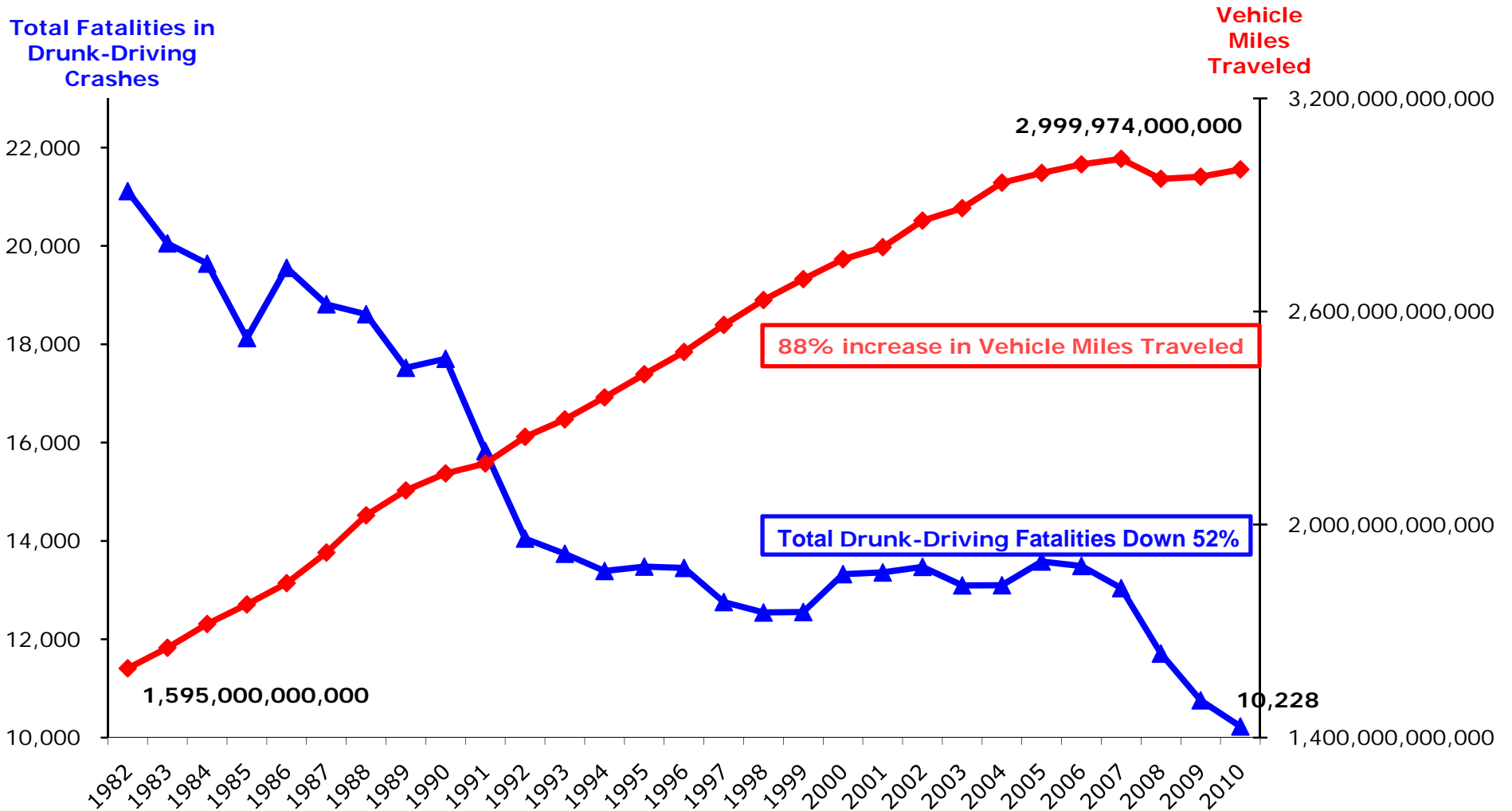
National Highway Traffic Safety Administration

Total Drunk-Driving Fatalities Per Billion Vehicle Miles Traveled



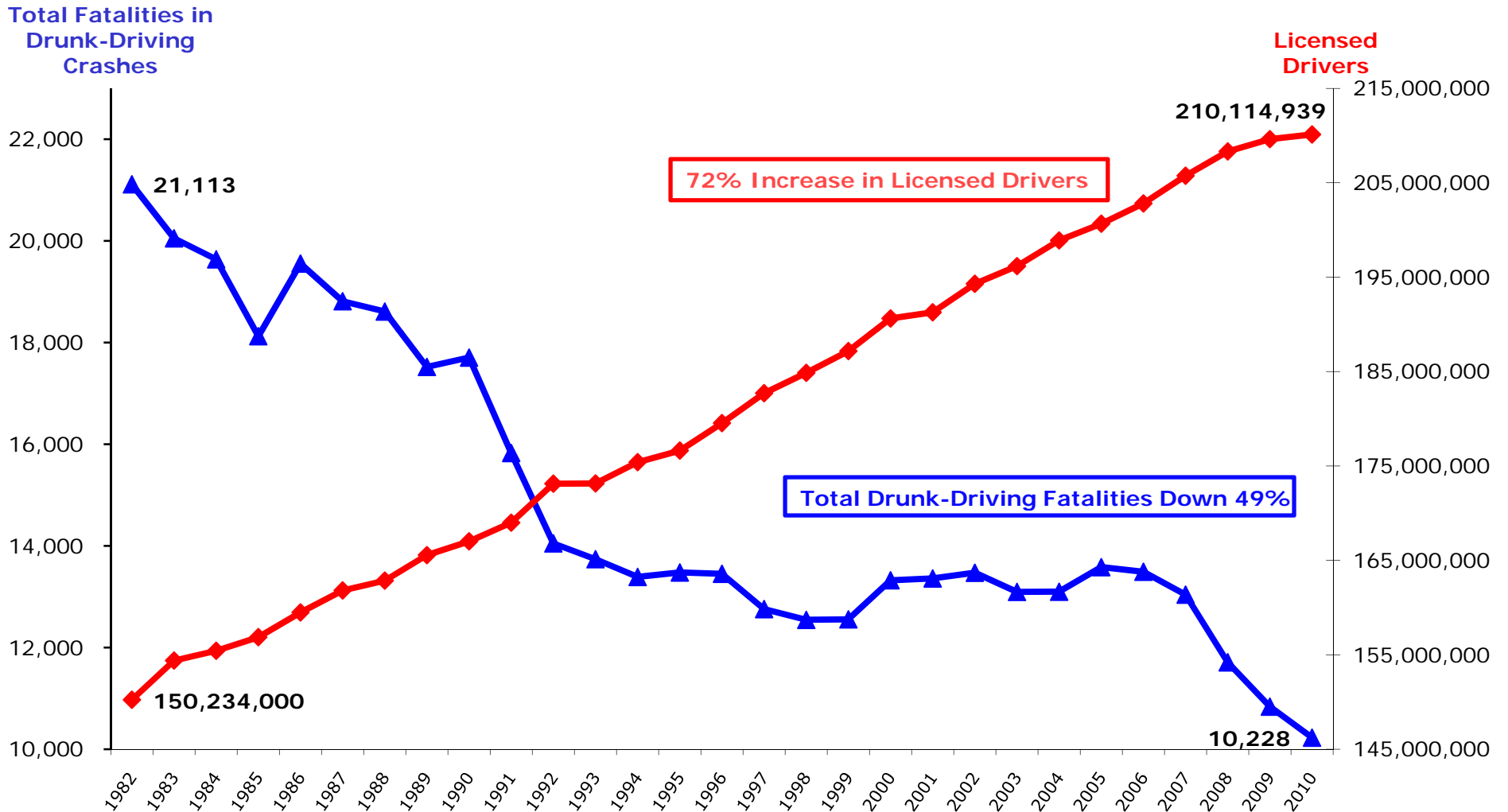
Source: U.S. Department of Transportation, National Highway Traffic Safety Administration. Federal Highway Administration Annual Highway Statistics; Drunk-driving fatalities represent the total number of fatalities (occupants and nonoccupants) in motor vehicle traffic crashes involving a driver or motorcycle rider with a blood alcohol concentration of .08 or higher. <http://www-nrd.nhtsa.dot.gov/Pubs/811552.pdf> ; <http://www.fhwa.dot.gov/policyinformation/statistics/2010/dl22.cfm>

U.S. Department of Transportation National Highway Traffic Safety Administration



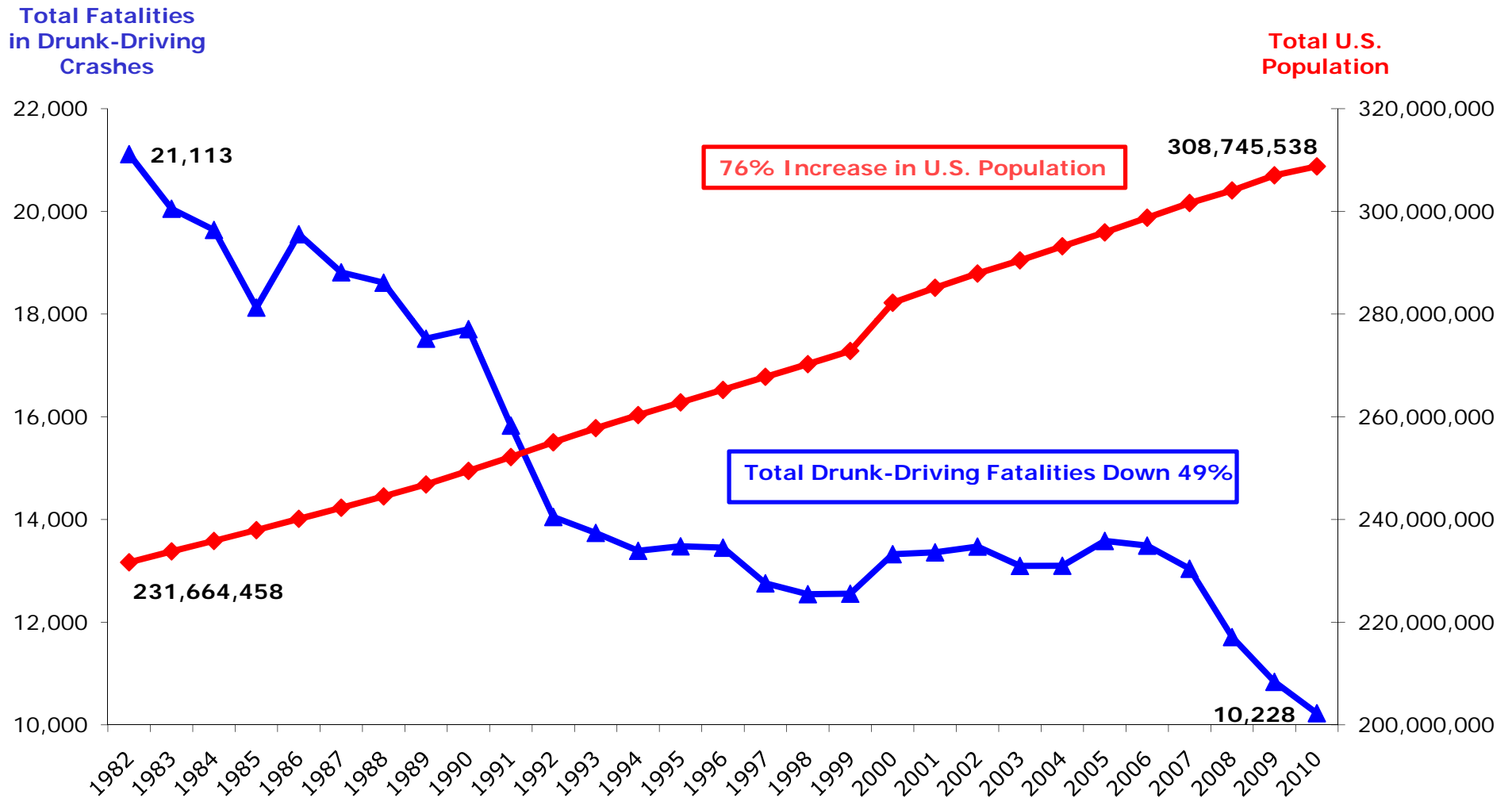
Source: U.S. Department of Transportation, National Highway Traffic Safety Administration. Federal Highway Administration Annual Highway Statistics; Drunk-driving fatalities represent the total number of fatalities (occupants and nonoccupants) in motor vehicle traffic crashes involving a driver or motorcycle rider with a blood alcohol concentration of .08 or higher. <http://www-nrd.nhtsa.dot.gov/Pubs/811552.pdf>; <http://www.fhwa.dot.gov/policyinformation/statistics/2010/dl22.cfm> ; http://www.fhwa.dot.gov/policyinformation/statistics/vm03_summary.cfm ;

U.S. Department of Transportation National Highway Traffic Safety Administration



Source: U.S. Department of Transportation, National Highway Traffic Safety Administration. Federal Highway Administration Annual Highway Statistics; Drunk-driving fatalities represent the total number of fatalities (occupants and nonoccupants) in motor vehicle traffic crashes involving a driver or motorcycle rider with a blood alcohol concentration of .08 or higher. <http://www-nrd.nhtsa.dot.gov/Pubs/811552.pdf>; <http://www.fhwa.dot.gov/policyinformation/statistics/2010/dl22.cfm>; http://www.fhwa.dot.gov/policyinformation/statistics/vm03_summary.cfm;

U.S. Department of Transportation National Highway Traffic Safety Administration



Source: U.S. Department of Transportation, National Highway Traffic Safety Administration; Drunk-driving fatalities represent the total number of fatalities (occupants and nonoccupants) in motor vehicle traffic crashes involving a driver or motorcycle rider with a blood alcohol concentration of .08 or higher. <http://www.nrd.nhtsa.dot.gov/Pubs/811172.pdf>
 Source: U.S. Census Bureau, Intercensal population estimates 1980-1989 <http://www.census.gov/popest/archives/1980s/st8090ts.txt>; 1990-1999, http://www.census.gov/popest/archives/2000s/vintage_2001/CO-EST2001-12/; 2000-2006, <http://www.census.gov/popest/states/NST-ann-est.html>; 2007, http://factfinder.census.gov/servlet/DTable?_bm=y&-geo_id=01000US&-ds_name=PEP_2007_EST&-lang=en&-mt_name=PEP_2007_EST_G2007_T001&-format=&-CONTEXT=dt; 2008, <http://www.census.gov/popest/states/NST-ann-est.html>; 2009-2010 <http://2010.census.gov/2010census/popmap/>