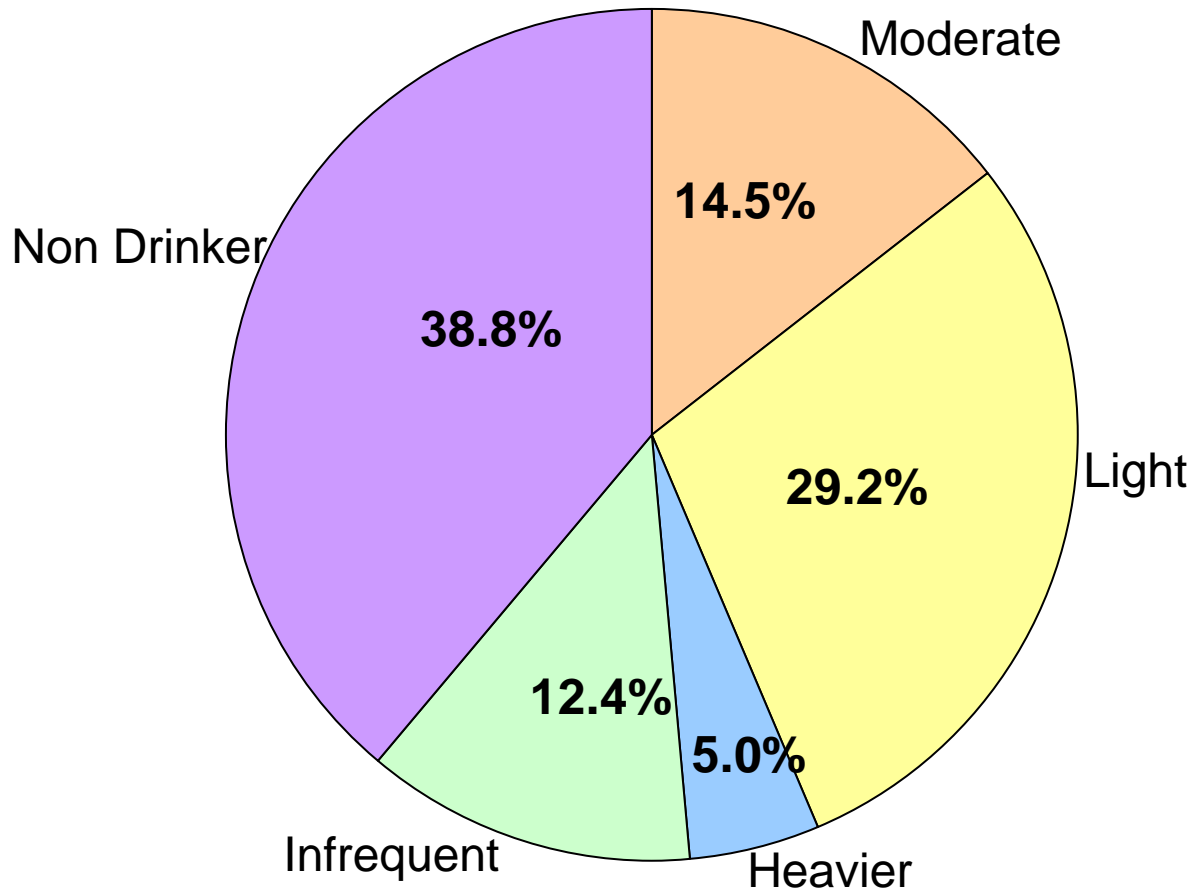


**Center for Disease Control and Prevention  
National Center for Health Statistics  
National Health Interview Survey**

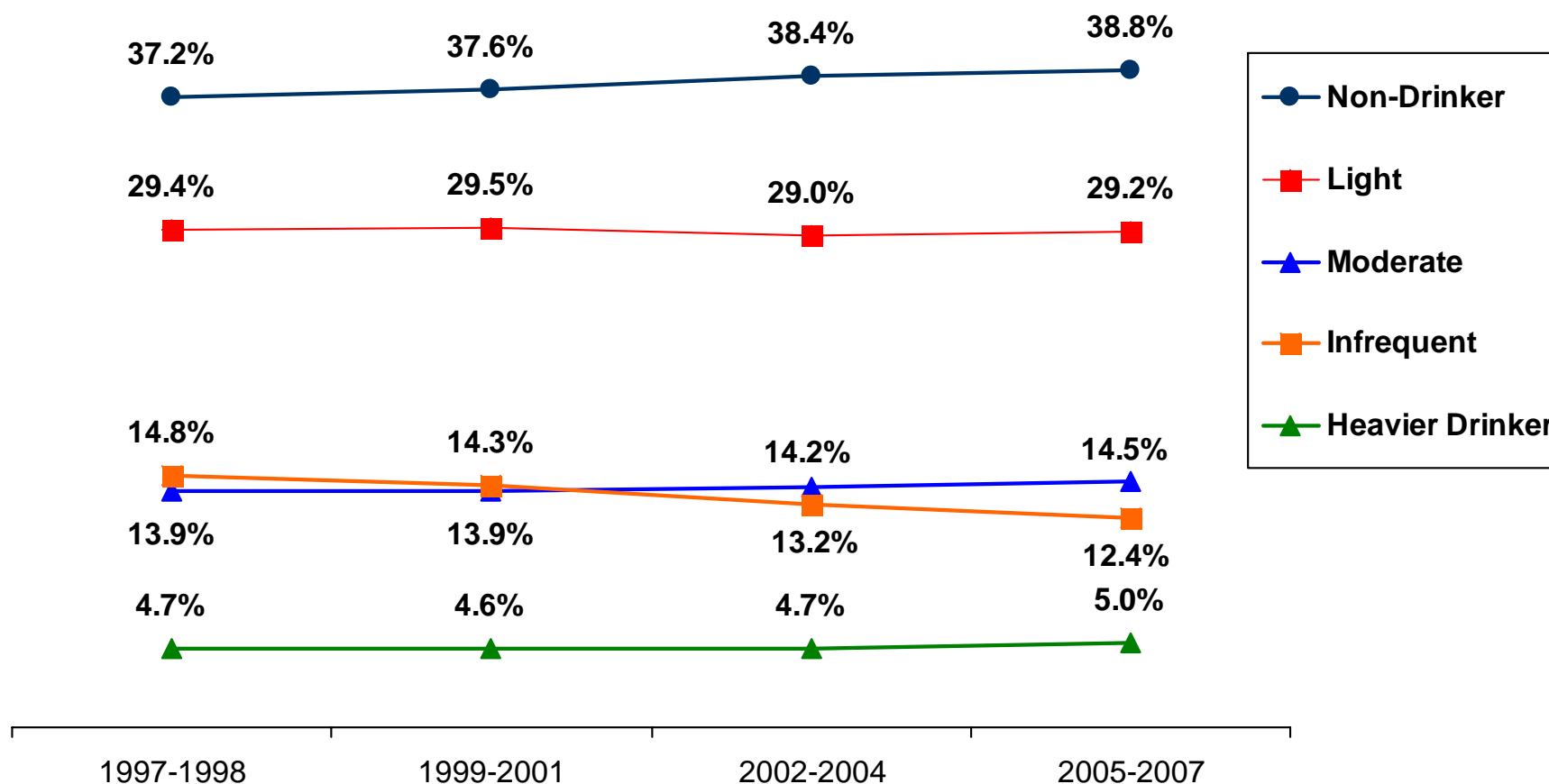


Source: Centers for Disease Control and Prevention, National Center for Health Statistics, National Health Interview Survey showing the percent distribution of current alcohol drinking status for adults 18 years of age and older according to selected characteristics in the United States, 2005-2007:

[http://www.cdc.gov/nchs/data/series/sr\\_10/sr10\\_245.pdf](http://www.cdc.gov/nchs/data/series/sr_10/sr10_245.pdf)

Definitions: Current alcohol drinking status: Nondrinker is defined as a person who had no drinks in past year (includes both former drinkers and lifetime abstainers); infrequent is defined as having had 12 or more drinks in lifetime and 1–11 drinks in past year; light is defined as having had 12 or more drinks in lifetime, at least 12 drinks in the past year, and 3 drinks or fewer per week, on average; moderate is defined as having had more than 3 drinks per week up to 14 drinks per week (for men) and more than 3 drinks per week up to 7 drinks per week (for women), on average; heavier is defined as having had more than 14 drinks per week (for men), and more than 7 drinks per week (for women), on average.

# Center for Disease Control and Prevention National Center for Health Statistics National Health Interview Survey



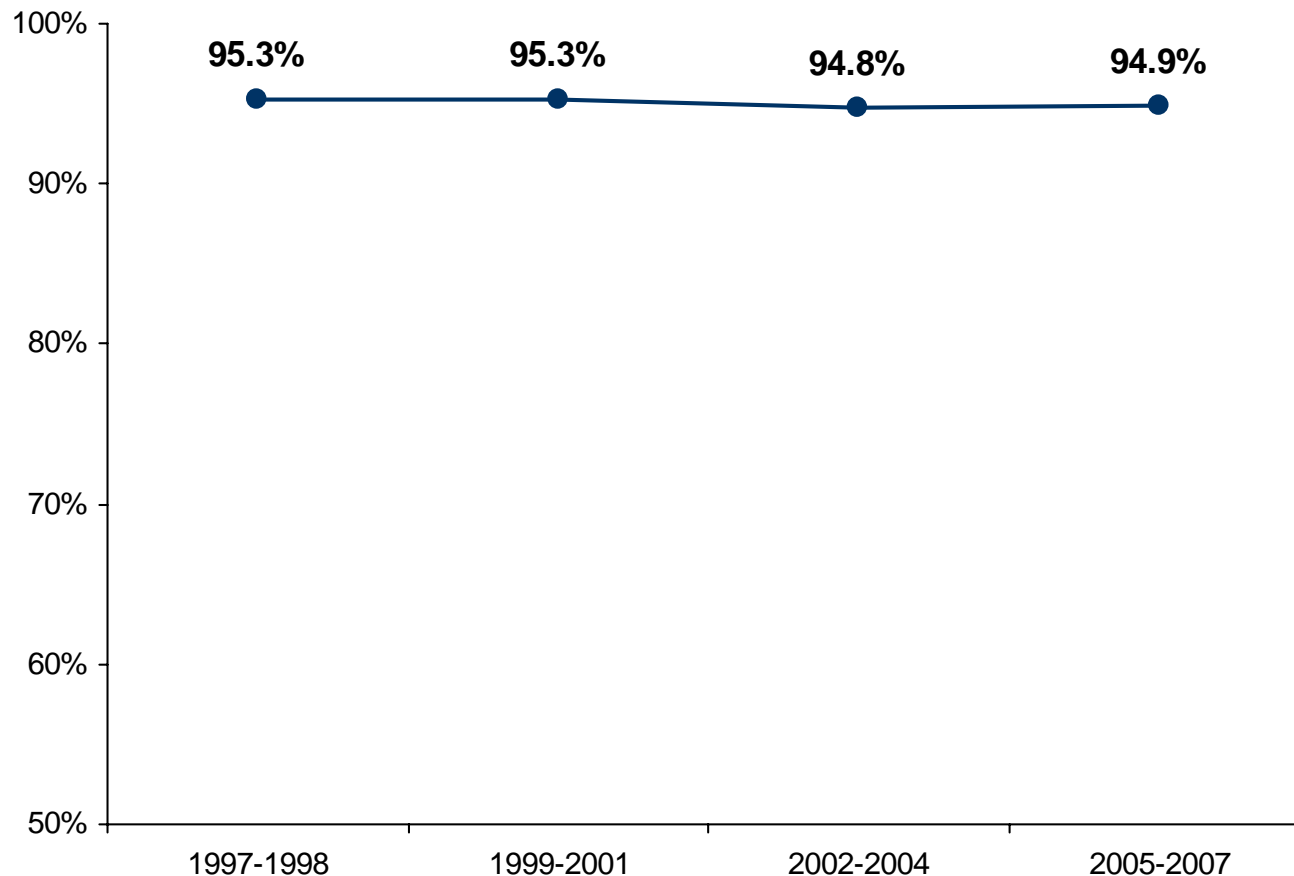
Source: Centers for Disease Control and Prevention, National Center for Health Statistics, National Health Interview Survey showing the percent distribution of current alcohol drinking status for adults 18 years of age and older according to selected characteristics in the United States. 1997-1998:

<http://www.cdc.gov/nchs/data/erratas/ad324compt2.pdf> ; 1999-2001: [http://www.cdc.gov/nchs/data/series/sr\\_10/sr10\\_219companion.pdf](http://www.cdc.gov/nchs/data/series/sr_10/sr10_219companion.pdf) ; 2002-2004:

[http://www.cdc.gov/nchs/data/series/sr\\_10/sr10\\_230.pdf](http://www.cdc.gov/nchs/data/series/sr_10/sr10_230.pdf); 2005-2007: [http://www.cdc.gov/nchs/data/series/sr\\_10/sr10\\_245.pdf](http://www.cdc.gov/nchs/data/series/sr_10/sr10_245.pdf)

Definitions: Current alcohol drinking status: Nondrinker is defined as a person who had no drinks in past year (includes both former drinkers and lifetime abstainers); infrequent is defined as having had 12 or more drinks in lifetime and 1–11 drinks in past year; light is defined as having had 12 or more drinks in lifetime, at least 12 drinks in the past year, and 3 drinks or fewer per week, on average; moderate is defined as having had more than 3 drinks per week up to 14 drinks per week (for men) and more than 3 drinks per week up to 7 drinks per week (for women), on average; heavier is defined as having had more than 14 drinks per week (for men), and more than 7 drinks per week (for women), on average.

**Center for Disease Control and Prevention  
National Center for Health Statistics  
National Health Interview Survey  
*Moderate, Light, Infrequent and Non-Drinker Categories***



Source: Centers for Disease Control and Prevention, National Center for Health Statistics, National Health Interview Survey showing the percent distribution of current alcohol drinking status for adults 18 years of age and older according to selected characteristics in the United States. 1997-1998:

<http://www.cdc.gov/nchs/data/erratas/ad324compt2.pdf> ; 1999-2001: [http://www.cdc.gov/nchs/data/series/sr\\_10/sr10\\_219companion.pdf](http://www.cdc.gov/nchs/data/series/sr_10/sr10_219companion.pdf) ; 2002-2004:

[http://www.cdc.gov/nchs/data/series/sr\\_10/sr10\\_230.pdf](http://www.cdc.gov/nchs/data/series/sr_10/sr10_230.pdf); 2005-2007: [http://www.cdc.gov/nchs/data/series/sr\\_10/sr10\\_245.pdf](http://www.cdc.gov/nchs/data/series/sr_10/sr10_245.pdf)

Definitions: Current alcohol drinking status: Nondrinker is defined as a person who had no drinks in past year (includes both former drinkers and lifetime abstainers); infrequent is defined as having had 12 or more drinks in lifetime and 1–11 drinks in past year; light is defined as having had 12 or more drinks in lifetime, at least 12 drinks in the past year, and 3 drinks or fewer per week, on average; moderate is defined as having had more than 3 drinks per week up to 14 drinks per week (for men) and more than 3 drinks per week up to 7 drinks per week (for women), on average; heavier is defined as having had more than 14 drinks per week (for men), and more than 7 drinks per week (for women), on average.