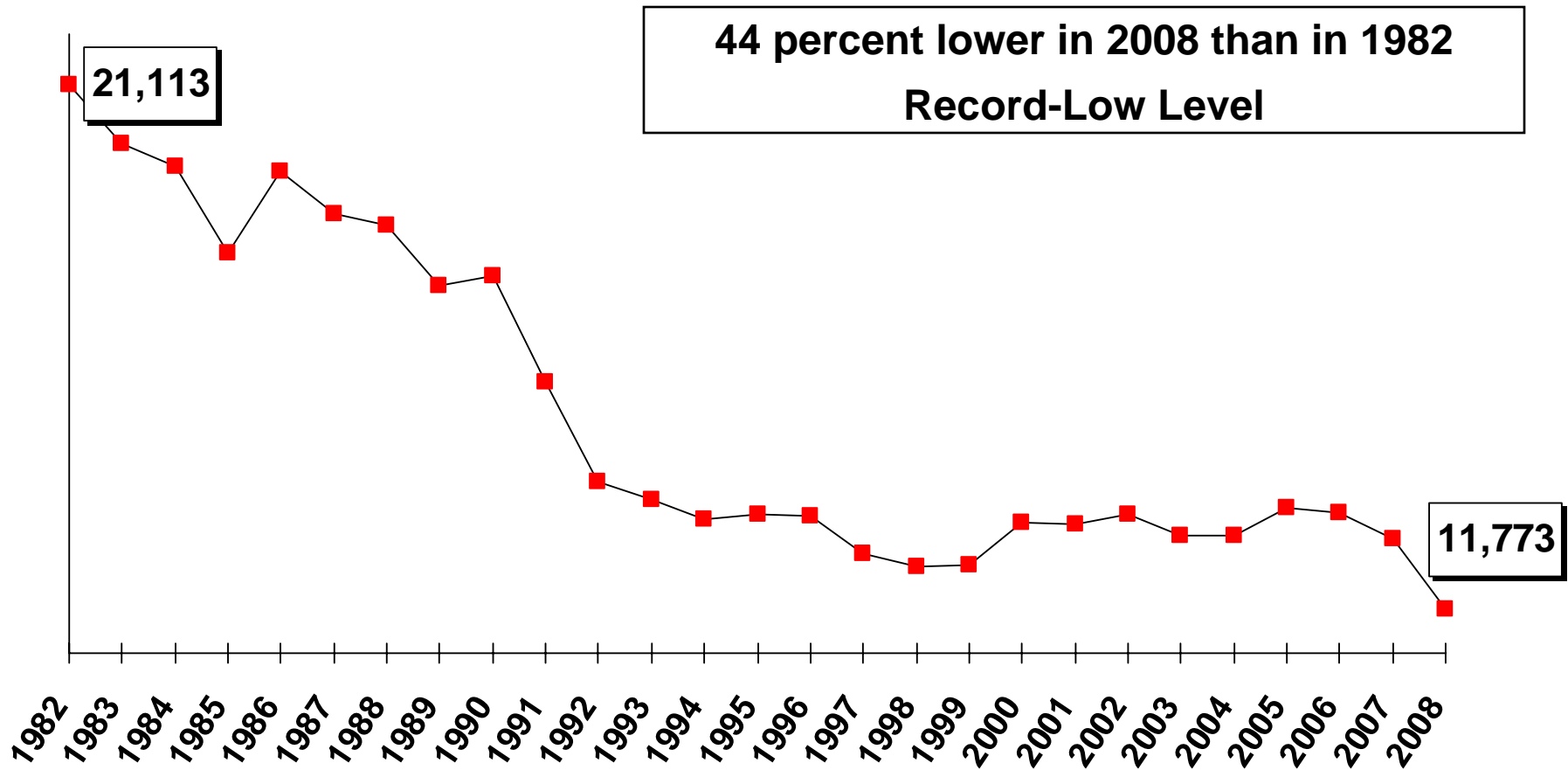


Total Fatalities in Drunk-Driving Crashes



Source: National Highway Traffic Safety Administration, U.S. Department of Transportation. Drunk-driving fatalities represent the total number of fatalities (occupants and nonoccupants) in motor vehicle traffic crashes involving a driver or motorcycle rider with a blood alcohol concentration of .08 or higher.
<http://www-nrd.nhtsa.dot.gov/Pubs/811172.pdf>