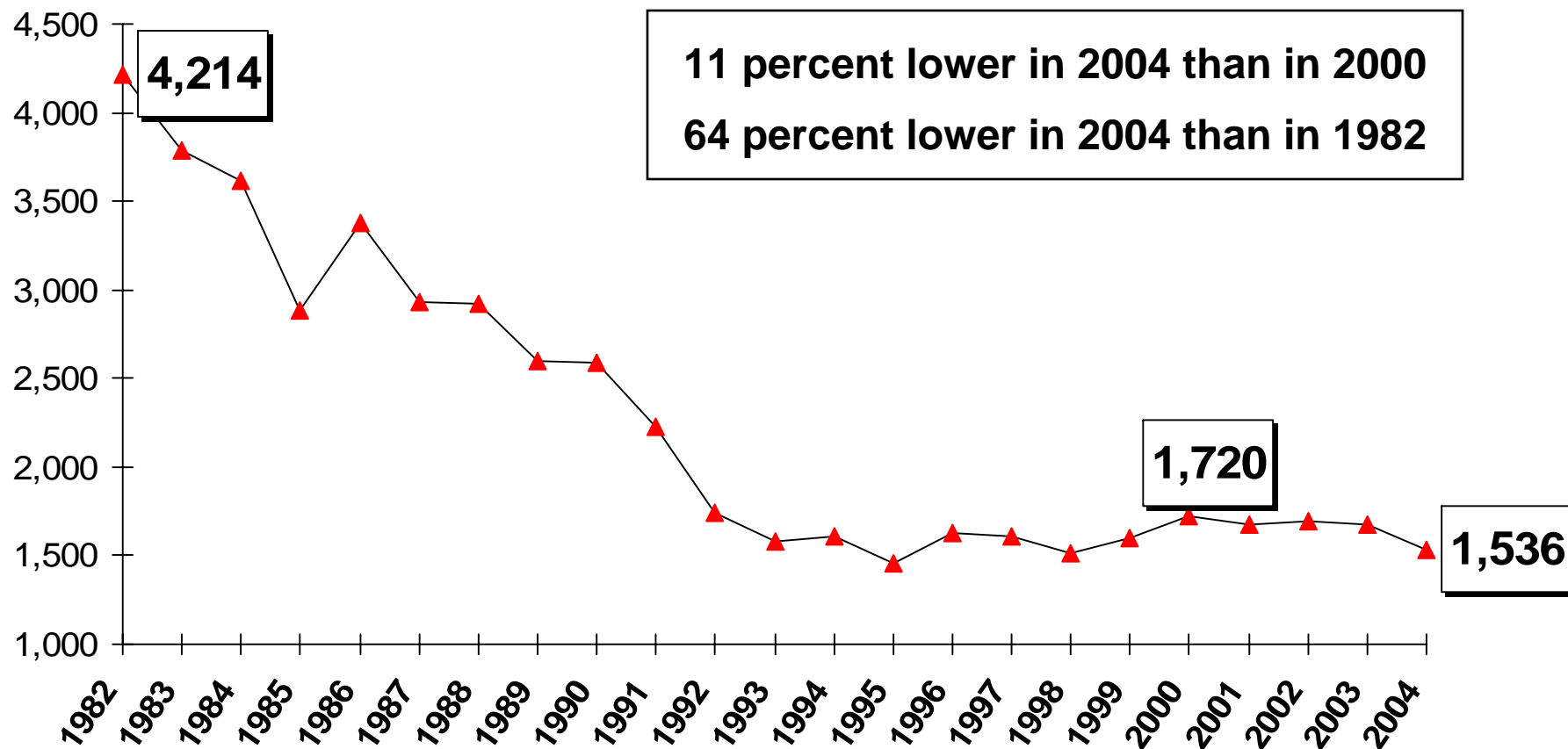


# Total Fatalities in Teen Drunk-Driving Crashes



Source: National Highway Traffic Safety Administration, U.S. Department of Transportation, 2005. Teen drunk-driving crashes represent the total number of people (occupants and nonoccupants) killed in motor vehicle traffic crashes in which at least one teenage (16-20) driver had a BAC of .08 or higher.